

## LMS CATTLE WAGON REF 7023

This kit is built to M.R. Drawing No 5540, which became the first LMS cattle wagon design. A total of 2050 were built between 1923 and 1926. A number of these vehicles were used as Ale wagons, and during the war were used to transport a variety of goods. The first 950 were built at Derby, and thereafter, the remainder being built by private builders. As such there were minor detail alterations to these later batches. Our kit is based on the lot numbers below, which constituted the standard for these wagons. Many of these wagons lasted well into the B.R. period some being repainted in red oxide. There are a good selection of photographs of the various types in "Official drawing of LMS Wagons No 1" by R.J. Essery, published by Wild Swann and in "An Illustrated History of LMS Wagons Vol 1 also by R.J. Essery but published by O.P.C.

Below is a list of those built at Derby.

LOT	QTY	DATE	KNOWN No's
*987	300	1923	118,1621,8329,17887,55608
3	150	1924	816,6547,17878,26356,75906
106	250	1924-5	132526,182085,307296,338781
142	200	1925	131553,182516,215104,307715
152	50	1925-7	331,46748

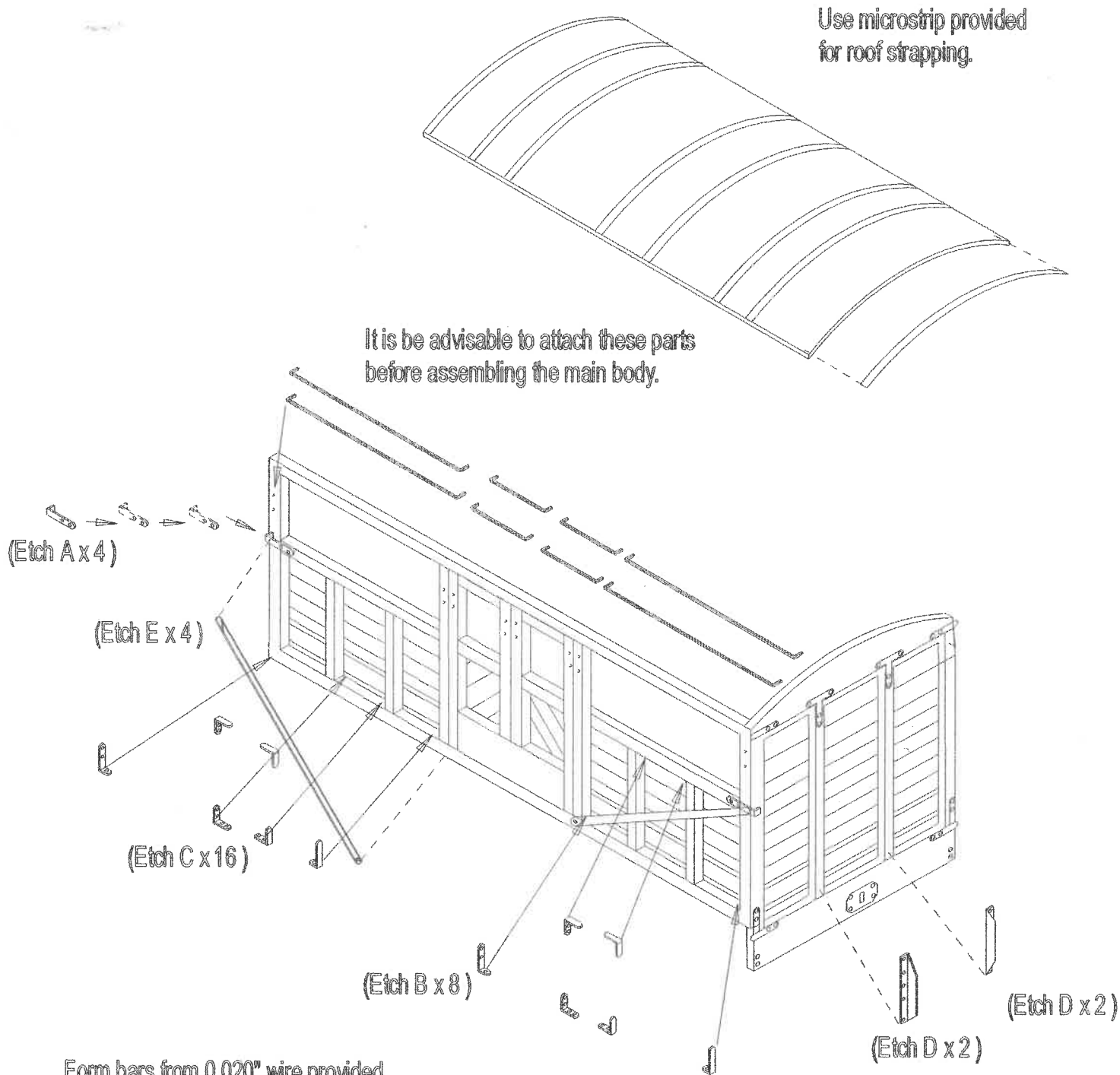
\* 136 of these were built with automatic vacuum pipes.

For those modellers who wish to build this version a special vacuum pipe has been created Ref: 7216.

These vehicles lasted throughout the L.M.S. and into the B.R. period. Number M14400 appears to have come from one of the above lots and was photographed at Lugton in June 1962. But by then it had acquired 2 pairs of split spoke wagon wheels.

We have supplied the Kit with 8 spoke wagon wheels but there are plenty of photographs showing wagons fitted with three hole disk wheels. Some of the above vehicles were later branded for Ale traffic, known numbers were 2475, 13429, 34000.

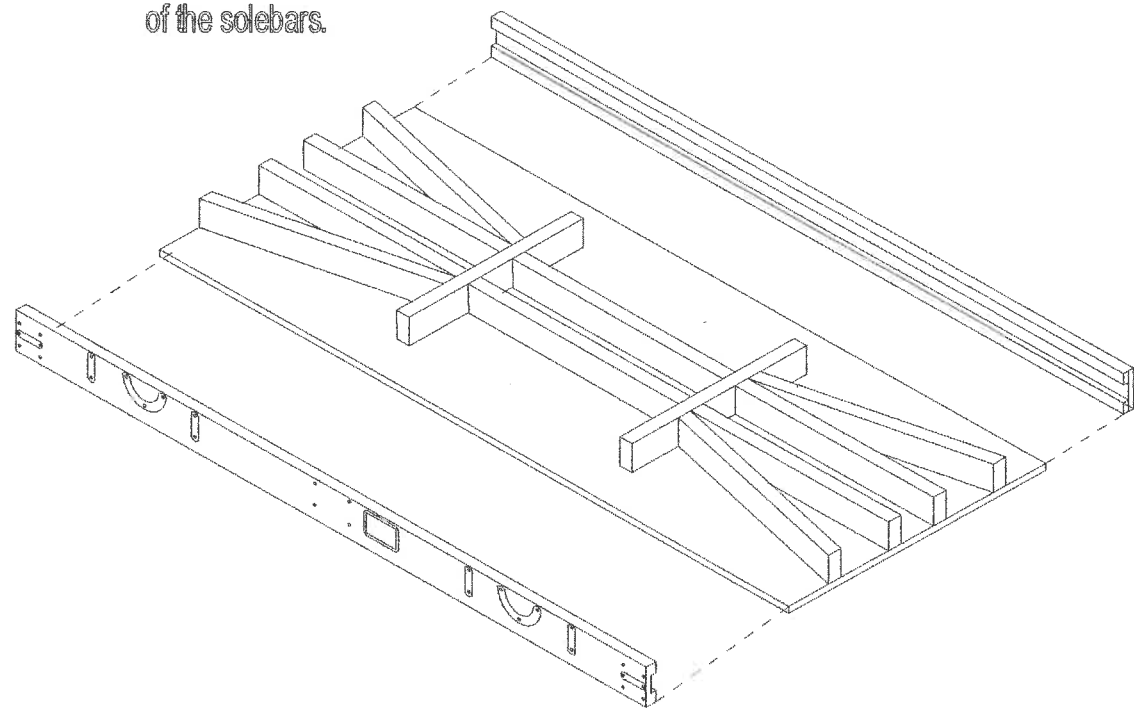
All of these vehicles were originally fitted with screw link couplings, however we have supplied 3 link couplings with this kit. Should anyone wish to fit scale screw link couplings Ref M7023, return the packet of 3 links and £6 for exchange.



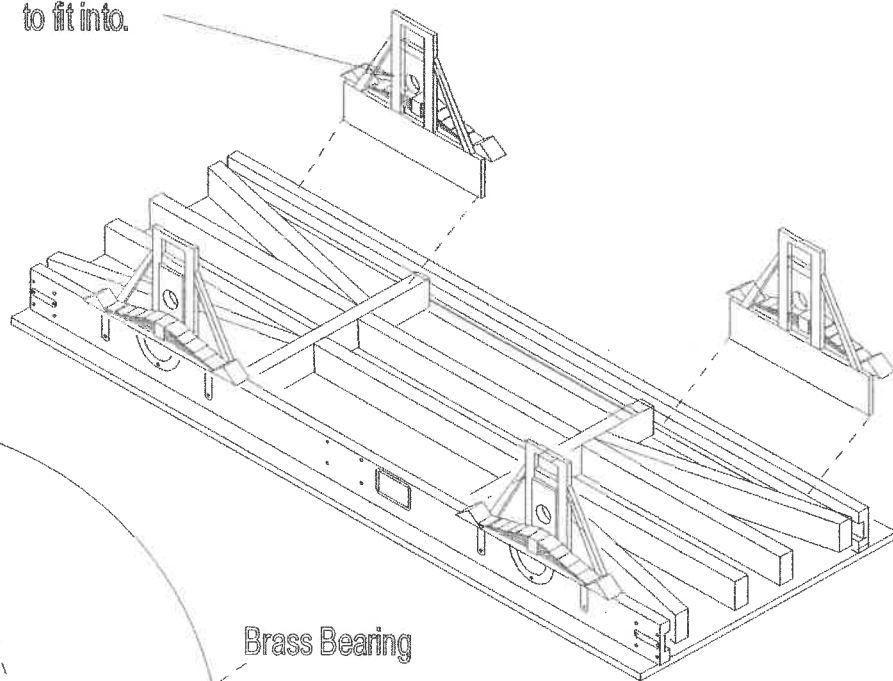
Form bars from 0.020" wire provided. A template has been provided to aid in this and can be found on the detailing etch.

The bars are either 46.5mm or 15mm long with 2mm added for depth.

Note the orientation of the solebars.

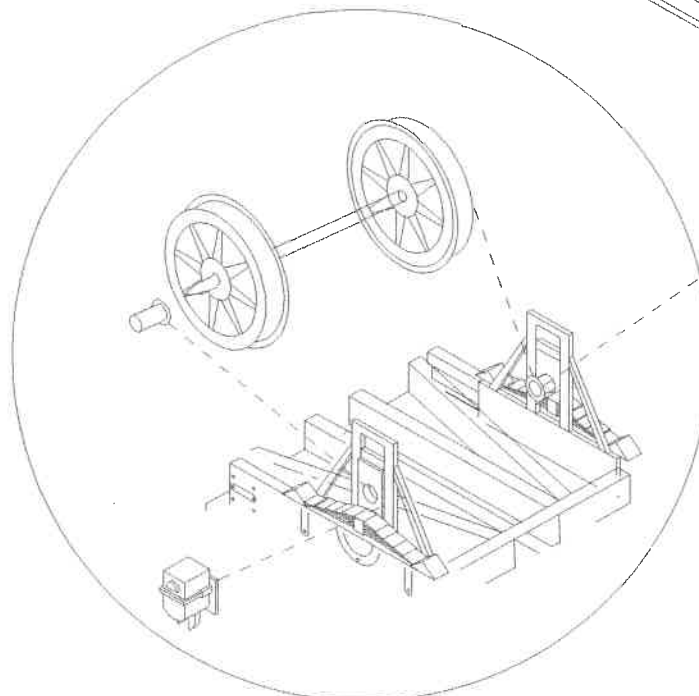


Counter sink the hole for the top hat bearing to fit into.



Brass Bearing

Fit wheels before adding second set of w irons. Wheels should be centered and not a loose fit. Move the bearing inwards to centre the axle between the axleguards. There should be no side play between the wheels and axleguards. A drop of glue will hold the bearings in place in the axleboxes.

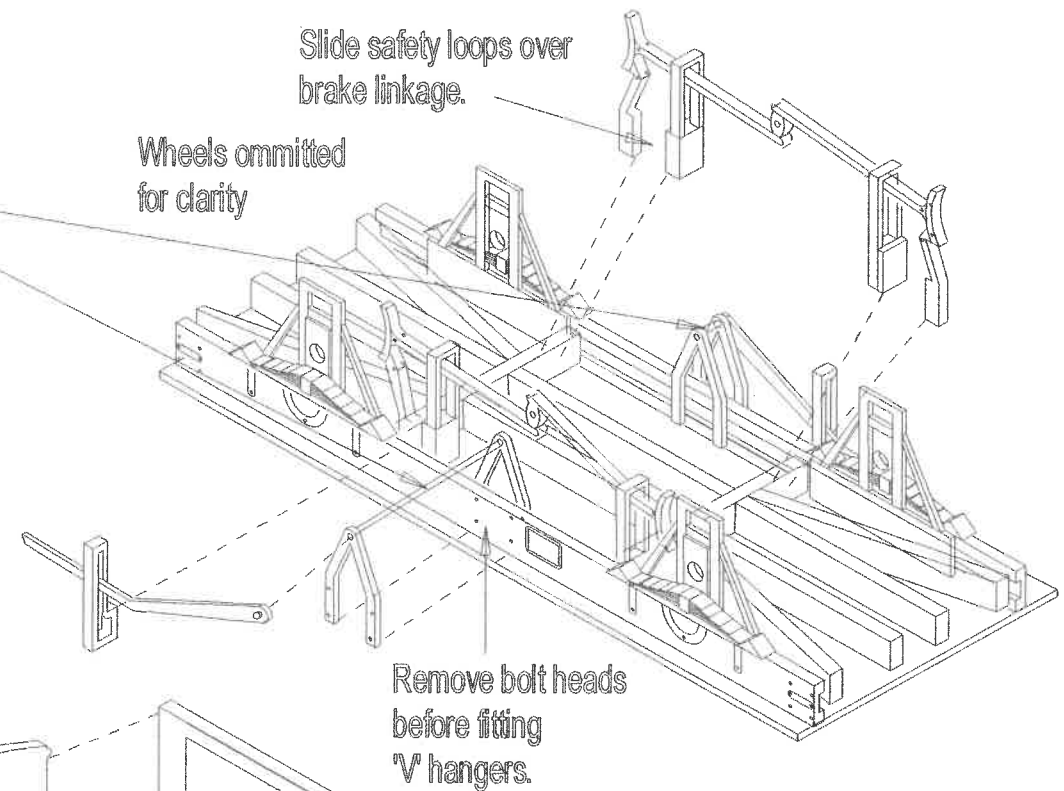


Insert two pieces 0.030" rod through V hangers and brake assembly.

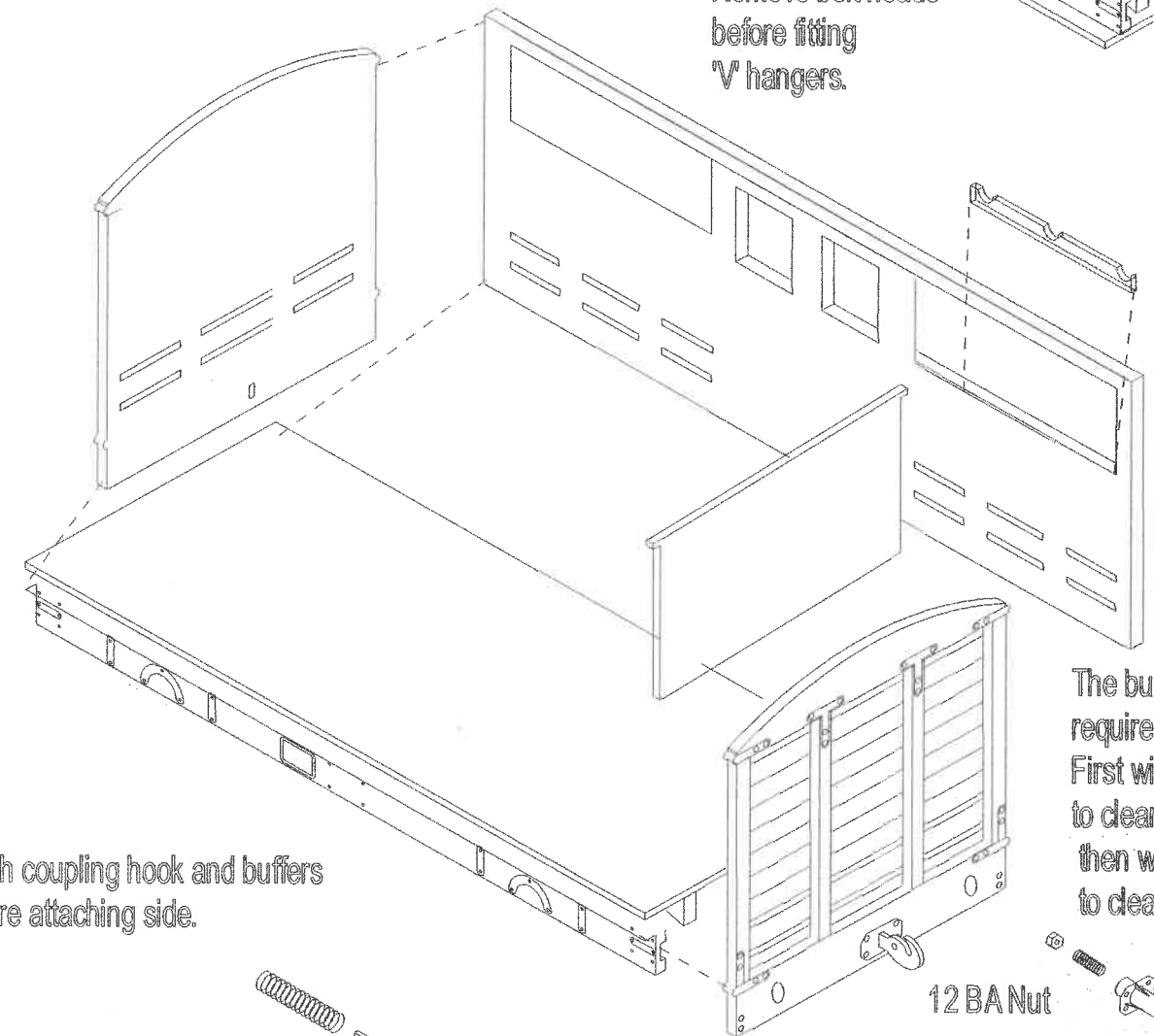
Brake levers fitted on right side of wagons.

Wheels omitted for clarity

Slide safety loops over brake linkage.

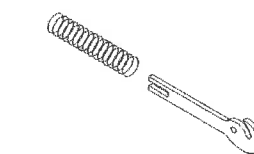


Remove bolt heads before fitting 'V' hangers.



Attach coupling hook and buffers before attaching side.

The buffer body may require cleaning out. First with a No 55 drill to clean through, and then with a No 49drill to clean the base.



Twist links to open attach last to hook in hole provided.

12 BA Nut

Spring

Buffer body

Buffer

